

TORNO ZMM C4 400 MX2000

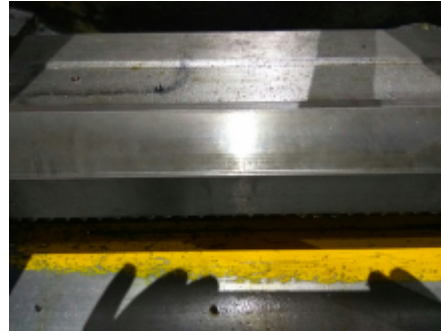
Ref: 046274



Especificaciones técnicas

Marca	ZMM - SLIVEN
MODELO	CU 400M x 2000
DISTANCIA ENTRE PUNTOS	2.000
DIAMETRO AGUJERO PRINCIPAL	72
DIAMETRO ADMITIDO SOBRE BANCADA	440
DIAMETRO ADMITIDO SOBRE ESCOTE	640
DIAMETRO ADMITIDO SOBRE CARRO	240
RPM	2000
POTENCIA MOTOR PRINCIPAL	7,5 KW
AÑO	2005
PESO	2.900

Imágenes



STANDARD MACHINE SPECIFICATIONS		Standard	Optional
CAPACITY	Height to center	mm	200 / 250
	Swing over tool	mm	300 / 300
	Swing over cross slide	mm	300 / 300
	Swing to gap	mm	300 / 300
	Width of bed	mm	400
Distances between centers	mm	1000 / 1000 / 1000 / 1000 / 1000 / 1000	
	mm	4000 / 5000	
SPINDLE	Spindle nose DN ISO21	Yes	0
	Spindle lock	mm	12
	Spindle taper	Metric	30
	Number of spindle speeds		21
HEAD STOCK	Spindle speed range	rpm	80 - 3000
	Motor motor power	kW	1.5 (1 / 1)
	FEEDS	Number of feeds	60
Longitudinal feed range	mm/min	0.20 - 1.0	
	Cross feed range	mm/min	0.20 - 4
	THREADS	Number of threads	34
Metric thread range		mm	0.8 - 120
Imperial thread range		inch	30 - 5
Module thread range		Module	0.25 - 30
CUTTING	DP thread range	DP	300 - 1
	Cross slide travel	mm	300
TOOL HOLDER	Top slide travel	mm	300
	TOOL HOLDER	Tool diameter	mm
Tool length		mm	150
Tool nose		mm	200
WEIGHT	kg	2000	2000