

LATHE ZMM C4 400 MX2000

Ref: 046274



Central

Blanco Macael, s/n

Pol. Ind. Las Norias - 03670 Monforte del Cid (Alicante)

Telephone: +34 966 662 296 / FAX: +34 966 663 856

Delegation IBI

Avda. de la provincia, 73

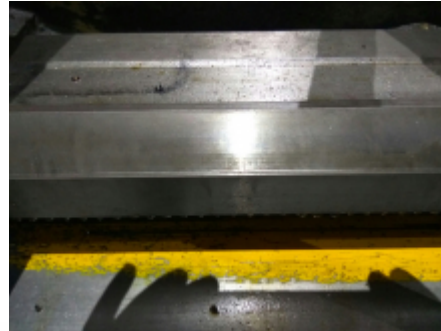
03440 IBI (Alicante)

Telephone: +34 965 553 233 / FAX: +34 966 554 990

Tech specs

| | |
|--------------------------------|----------------|
| Brand | ZMM - SLIVEN |
| MODEL | CU 400M x 2000 |
| DISTANCE BETWEEN POINTS | 2.000 |
| DIAMETER MAIN HOLE | 72 |
| SWING OVER BED | 440 |
| SWING OVER GAP | 640 |
| SWING OVER CARRIAGE | 240 |
| RPM | 2000 |
| MAIN MOTOR POWER | 7,5 KW |
| YEAR | 2005 |
| WEIGHT | 2.900 |

Images



| STANDARD MACHINE SPECIFICATIONS | | Standard | Optional |
|---------------------------------|--------------------------|--|------------|
| CAPACITY | Height of center | mm | 200 - 250 |
| | Swing over tool | mm | 300 - 350 |
| | Swing over cross slide | mm | 300 - 350 |
| | Swing to gap | mm | 300 - 350 |
| | Width of bed | mm | 400 |
| Distances between centers | mm | 1000 - 1600 - 2000 - 2500 - 3000 - 4000 - 5000 | |
| | mm | 0 | |
| SPINDLE | Spindle nose DN ISO21 | Yes | 0 |
| | Spindle lock | mm | 12 |
| | Spindle taper | Metric | 30 |
| HEAD STOCK | Number of spindle speeds | | 21 |
| | Spindle speed range | rpm | 80 - 3000 |
| | Motor motor power | kW | 1.5 (1/2) |
| FEEDS | Number of feeds | | 60 |
| | Longitudinal feed range | mm/min | 0.20 - 1.0 |
| | Cross feed range | mm/min | 0.20 - 1.0 |
| THREADS | Number of threads | | 34 |
| | Metric thread range | mm | 0.8 - 120 |
| | UK thread range | mm | 0.8 - 1.5 |
| | Module thread range | Module | 0.25 - 10 |
| | DP thread range | DP | 0.25 - 1 |
| CUTTING | Cross slide travel | mm | 600 |
| | Top slide travel | mm | 600 |
| TAIL STOCK | Quill diameter | mm | 60 |
| | Quill taper | mm | 60:0 |
| | Quill travel | mm | 200 |
| WEIGHT | kg | 2000 | 2000 |