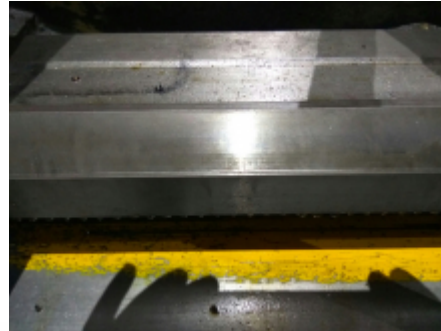


LATHE ZMM C4 400 MX2000

Ref: 046274



Bilder



STANDARD MACHINE SPECIFICATION		Standard	Optional
CAPACITY	Height of center	mm	200 - 250
	Swing over tool	mm	300 - 350
	Swing over cross slide	mm	300 - 350
	Swing to gap	mm	300 - 350
	Width of bed	mm	400
DISTANCE BETWEEN CENTERS		mm	1000, 1200, 1500, 2000, 2500, 3000
	Spindle nose DN ISO21	Yes	No
SPINDLE	Spindle bore	mm	12
	Spindle taper	Metric	30
	HEAD STOCK	Number of spindle speeds	
Spindle speed range		rpm	80 - 3000
Main motor power		kW	1.5 (1.1)
FEEDS	Number of feeds		60
	Longitudinal feed range	mm/min	0.20 - 1.0
	Cross feed range	mm/min	0.20 - 1.0
	THREADS	Number of threads	
Metric thread range		mm	0.8 - 120
Imperial thread range		inch	0.25 - 5
Module thread range		Module	0.25 - 10
DP thread range		DP	0.25 - 1
CUTTING	Cross slide travel	mm	60
	Top slide travel	mm	60
TAIL STOCK	Coll diameter	mm	60
	Coll taper	Metric	No. 3
	Coll bore	mm	30
WEIGHT		kg	2000 - 2500